



# Kamla-Kay McKenzie

**Gender:** Female  
**Languages Known:** English  
**Height:** 173cm/5ft 8inch  
**Weight (lbs):** 115  
**Chest/Bust:** 32  
**Cup Size:** A  
**Waist:** 24  
**Hips:** 34  
**Hair Color:** Brown  
**Hair Length:** Medium  
**Eye Color:** Green  
**Dress Size:** 2  
**Pant Size:** 5  
**Shoe Size:** 9  
**Gallery:**







NEW!  
**SUPERCREAM**  
COCONUT CURL STYLER

SMOOTH. SOFTEN. SHAPE. DEFINE. CONTROL.  
THE EVERYTHING YOU NEED CURL STYLER.



**DevaCurl**  
YOUR NEW  
SMOOTHER  
SHAPER  
MOISTURIZER  
DEFINER  
EVERYTHING YOU NEED  
CURL STYLER

MEET  
**SUPERCREAM**  
COCONUT CURL STYLER

EVERYTHING YOUR CURLS NEED. EVERY STYLE YOU WANT! #SUPERCREAMCHALLENGE





**Sabika Style**  
Formal Black

Classy beauty never goes out of style and formal black always makes a statement. Complete your look by pairing Sabika's elegant formal ensemble: The classic collar matching Sabika V-neck™ and SABA-KA™. Make the perfect evening Sabika V-neck™ party for a dramatic look. Visit us on-line: [www.sabika.com](http://www.sabika.com)

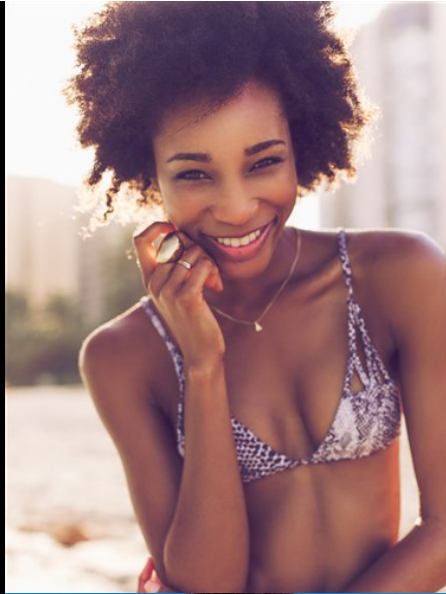








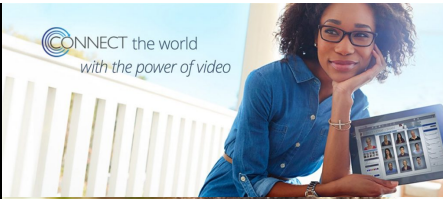


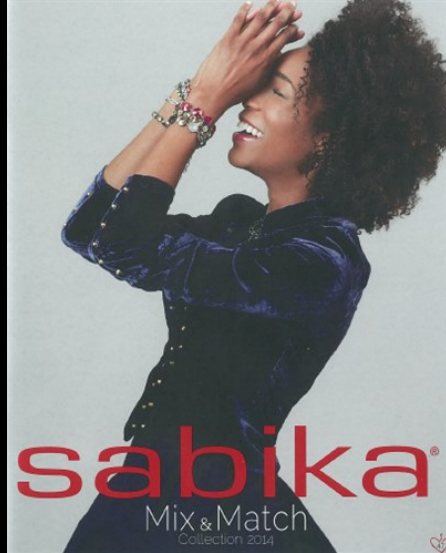






CONNECT the world  
*with the power of video*





**sabika**<sup>®</sup>  
Mix & Match  
Collection 2014













