

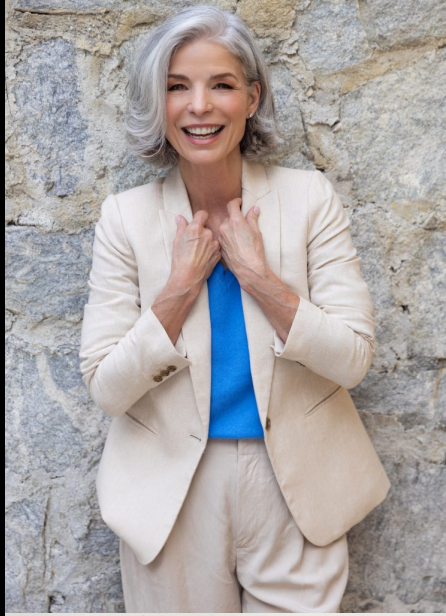


Kathi Odom

Gender: Female
Languages Known: English
Height: 178cm/5ft 10inch
Chest/Bust: 36
Cup Size: C
Waist: 28
Hips: 36
Hair Color: Salt & Pepper
Hair Length: Shoulder
Skin Color: Medium
Eye Color: Hazel
Dress Size: 4
Pant Size: 6
Shoe Size: 7.5
Gallery:











KASPER

up to 40% off
AFTER COUPON

[Shop Now](#)







High-Style Country Chic

Fall Fashion with a Western twist

Photographer: Matt Abbott
 Styling: Hani & Maloney
 Hair: Jami Walsh with Out Style
 Makeup: Nicole Olson
 and Kerri McGuire
 Special Thanks to Rachel Kuhl,
 owner of coordinator at Pepper
 Photography in America
 Thanks to Blue (on B's) and
 Maggie for being best people!



On the Farm at Lost Valley Farm, 2140, Dublin,
 California 94568. Photo by Matt Abbott
 (415) 435-1111. www.mattabbott.com
 Photo: Rachel Kuhl, www.pepperphotography.com
 Photo: Kerri McGuire, www.kerriemcguire.com

Photo: Nicole Olson, www.nicoleolson.com
 Photo: Hani & Maloney, www.hanimaloney.com
 Photo: Jami Walsh, www.outstyle.com
 Photo: Kerri McGuire, www.kerriemcguire.com









