



## Nic Detorie

**Gender:** Male

**Languages Known:** English

**Height:** 185cm/6ft 1inch

**Waist:** 32

**Hair Color:** Brown

**Hair Length:** Short

**Skin Color:** Medium

**Eye Color:** Brown

**Coat:** 40

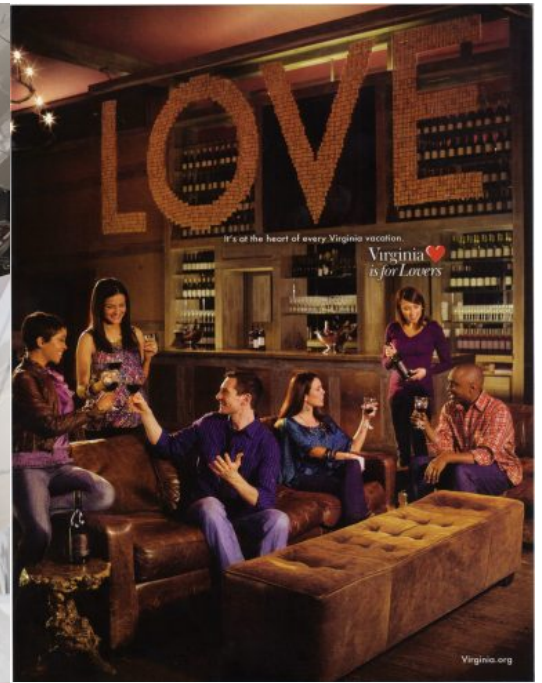
**Coat Length:** Long

**Sleeve:** 34

**Inseam:** 34

**Neck:** 16

**Gallery:**



*Sophia*  
BY DESIGN



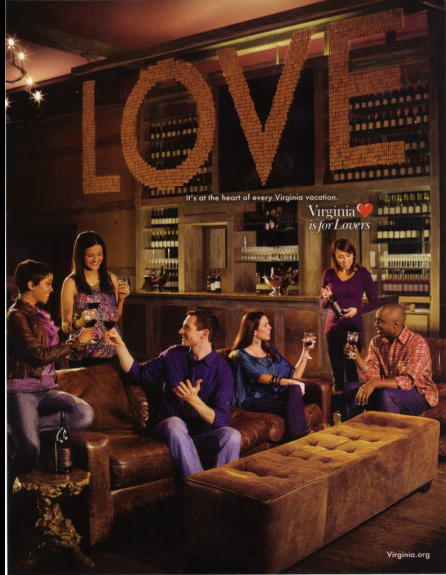
## SOPHISTIKATE



MORE LOOKS

[MEN TOPS](#) [MEN BOTTOMS](#) [MEN SHOES](#) [SALE](#)

[WOMEN](#) • [MEN](#) • [INSIDE SOPHISTIKATE](#) • [NEWS](#) • [CONTACT](#) • [LOG IN](#)













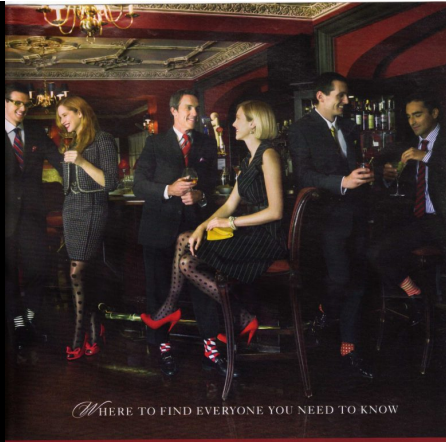
Gian Marco Menswear



HAND & STONE

MEMBERSHIP

benefits



WHERE TO FIND EVERYONE YOU NEED TO KNOW

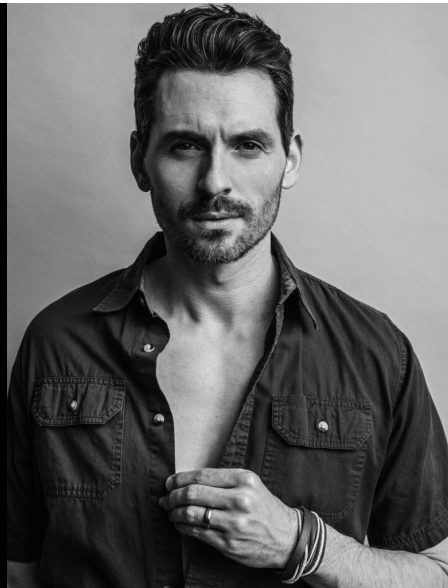
## *The Hay-Adams*

The place to be seen, but not heard. Where DC power lunches and politician mingle — it's always strictly *Off the Record*.

© 2014 Hay-Adams | WWW.HAYADAMS.COM | 2014 THE HAY-ADAMS AT 1611 K STREET, NW | WASHINGTON, DC 20005





A man wearing a black t-shirt with the text "TRAF FIG? NAK BRAH" in yellow and white, a black cap, glasses, and dark pants. He is striking a dynamic, dance-like pose with one leg raised and arms outstretched. The background is plain white.

Your stop & shop  
for Metro apparel  
and accessories.

The logo for Metro shop, featuring a large white letter 'M' inside a black circle, with the word "metro" in lowercase white letters below it, and the word "shop" in lowercase white letters to the right of the circle.







## Digital Dentistry Your Way

Henry Schein ConnectDental®, Henry Schein's platform for digital dentistry, integrates a wide choice of innovative, scalable digital technologies into every step of the clinical workflow. We are committed to helping you:

- Enhance the patient experience
- Deliver predictable, quality dentistry
- Improve efficiency and productivity

**Making the right solutions work for you.**

Practice Management Software	Scanners
Clinical Treatment Software	Milling Units
Laboratory Software	3D Printers
Patient Marketing	GA/GDM Materials
Patient Education Software	Dental Implants
2D/3D Imaging	Orthodontic Solutions
Intraoral Cameras	Computer Network Solutions



Relay on Us

**HENRY SCHEIN**  
ConnectDental

Trusted  
Digital  
Solutions

For more information about our Henry Schein ConnectDental Trusted Digital Solutions, please visit [www.henrychein.com](http://www.henrychein.com), or contact your Henry Schein Dental Sales Consultant for full product information.



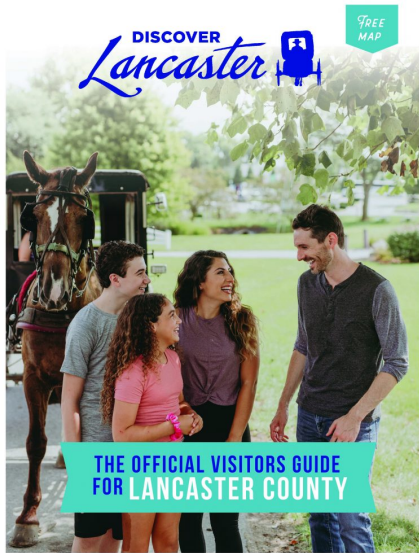




Host without  
spending the most.  
*Fancy-ish*















**Hyrimoz**  
adalimumab-adaz

Give your patients  
what they  
need from

A to Z

one source  
for HYRIMOZ

Comprehensive support for you, your staff, and your patients

Logistical Support for You and Your Staff:

- 1. Reimbursement Support
- 2. Sample Program
- 3. QuickStart Program
- 4. Device Demonstration Kits

Patient-Facing Services:

- 5. Nurse Ambassadors
- 6. Hi-Experten Training
- 7. Co-Play Card
- 8. Patient Transition Program

Learn more about Sandoz One Source for HYRIMOZ

**IMPORTANT SAFETY INFORMATION**  
**REGARDING HYRIMOZ**

**INDICATIONS**

Hyrimoz (adalimumab-adaz) is indicated for the treatment of patients with moderate to severe plaque psoriasis who are candidates for systemic therapy. Hyrimoz is also indicated for the treatment of patients with moderate to severe rheumatoid arthritis who are candidates for systemic therapy.

**CONTRAINDICATIONS**

Hyrimoz is contraindicated in patients with a known hypersensitivity to any component of the formulation.

**WARNINGS AND PRECAUTIONS**

**Immunosuppression:** Hyrimoz may increase the risk of infection, including opportunistic infections, and may increase the risk of tuberculosis. Patients should be screened for tuberculosis before starting treatment with Hyrimoz. Patients should be monitored for signs and symptoms of infection during treatment with Hyrimoz.

**Neurological Disorders:** Hyrimoz may increase the risk of neurological disorders, including multiple sclerosis and optic neuritis. Patients should be monitored for signs and symptoms of neurological disorders during treatment with Hyrimoz.

**Cardiovascular Disease:** Hyrimoz may increase the risk of cardiovascular disease, including heart failure and myocardial infarction. Patients should be monitored for signs and symptoms of cardiovascular disease during treatment with Hyrimoz.

**Other Warnings and Precautions:** Hyrimoz may increase the risk of other conditions, including hepatitis, lymphoma, and malignancies. Patients should be monitored for signs and symptoms of these conditions during treatment with Hyrimoz.

**ADVERSE REACTIONS**

The most common adverse reactions in patients with plaque psoriasis treated with Hyrimoz are injection site reactions, including pain, redness, and swelling. Other common adverse reactions include upper respiratory tract infections, nasopharyngitis, and sinusitis.

**DRUG INTERACTIONS**

Hyrimoz may interact with other medications, including immunosuppressants and live vaccines. Patients should inform their healthcare provider of all medications they are taking.

**USE IN SPECIFIC POPULATIONS**

**Pregnancy:** Hyrimoz may cause fetal harm when administered to pregnant women. Patients should be advised to avoid pregnancy during treatment with Hyrimoz.

**Nursing Mothers:** Hyrimoz is excreted in breast milk. Patients should avoid breastfeeding during treatment with Hyrimoz.

**See full prescribing information for Hyrimoz at [www.hyrimoz.com](#).**

CELEBRATE NATURE

Fine wine should breathe — and so should you. Fill your tote with a bottle or two (holds up to four!), some light bites and a merino blanket, and head outdoors.



Belle Picnic Tote  
Titan Milled Honey \$675  
Marsie Satchel  
Virginia Natural \$595  
Merino Wool Blanket  
Ash \$375



