



Teddy Tassy

Gender: Male

Languages Known: English

Height: 188cm/6ft 2inch

Weight (lbs): 180

Waist: 33

Hair Color: Black

Hair Length: Short

Eye Color: Brown

Shoe Size: 12

Coat: 40

Coat Length: Long

Sleeve: 34

Inseam: 34

Neck: 16

Gallery:

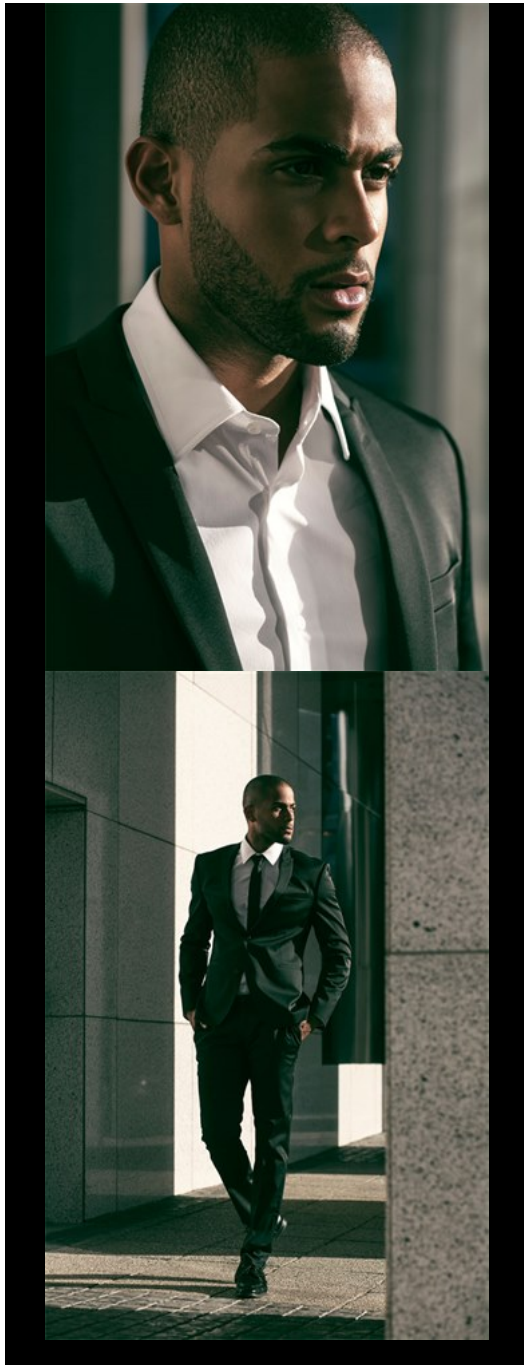














EXACT

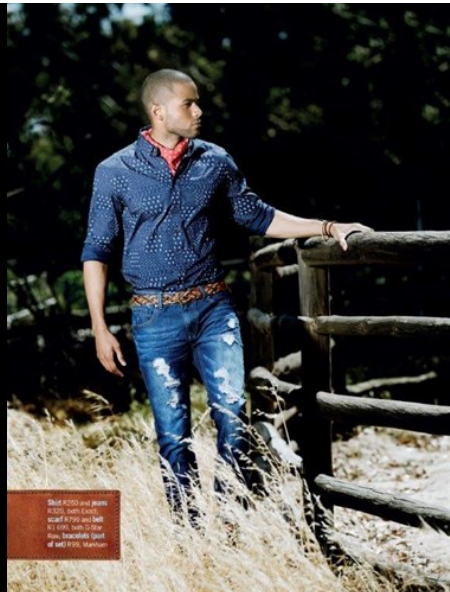
www.exact.co.za



KITTED OUT STYLE

T-shirt tops,
shorts or jog,
jackets or 70s and
80s style,
at least from
Burberry, Levi's
and 1950s, Mustang

MARCH 2015 21



Shirt R220 and jeans R221, both items available at 70% and 80% off. Also see the new, innovative sport of well-being.



KITTED OUT STYLE

Shirt R220 and jeans R221, both items available at 70% and 80% off. Also see the new, innovative sport of well-being.



Jacket \$199,
 t-shirt \$69,
 and jeans \$200,
 at East City FLAK,
 Manhattan
 March 2012 23



Elegantly Waisted

The only guys who don't like
 waistcoats are those who don't
 know how to use them. The
 key is to find the waistcoat that
 suits you best.
 There should be a waistcoat
 for every occasion. The only ones
 that don't work are the ones
 that are too tight or too loose.
 In the end, always wear it but
 never forget that it's there
 a warning for going for different
 colors and patterns, such
 as floral, stripes or vertical.

- 1. The fit of the waistcoat
- 2. The fit of the t-shirt
- 3. The fit of the jeans
- 4. The fit of the shoes
- 5. The fit of the watch
- 6. The fit of the belt
- 7. The fit of the sunglasses
- 8. The fit of the hat
- 9. The fit of the bag
- 10. The fit of the shoes
- 11. The fit of the watch
- 12. The fit of the belt
- 13. The fit of the sunglasses
- 14. The fit of the hat
- 15. The fit of the bag



Well Prepped

The dark suit is a classic choice for work, but it's not always the most interesting. To make it stand out, you need to pay attention to the details. A patterned tie and a watch can add a touch of personality to a otherwise standard outfit. The tan trousers are a great choice for a more relaxed, yet still professional look. The overall aesthetic is clean and sophisticated.

140



Dust Off Your Jacket

When it comes to jackets, you have a lot of options. A leather jacket is a classic choice that never goes out of style. It's a versatile piece that can be worn in a variety of settings. The olive green trousers are a great choice for a more casual, yet still sophisticated look. The overall aesthetic is rugged and stylish.

141













